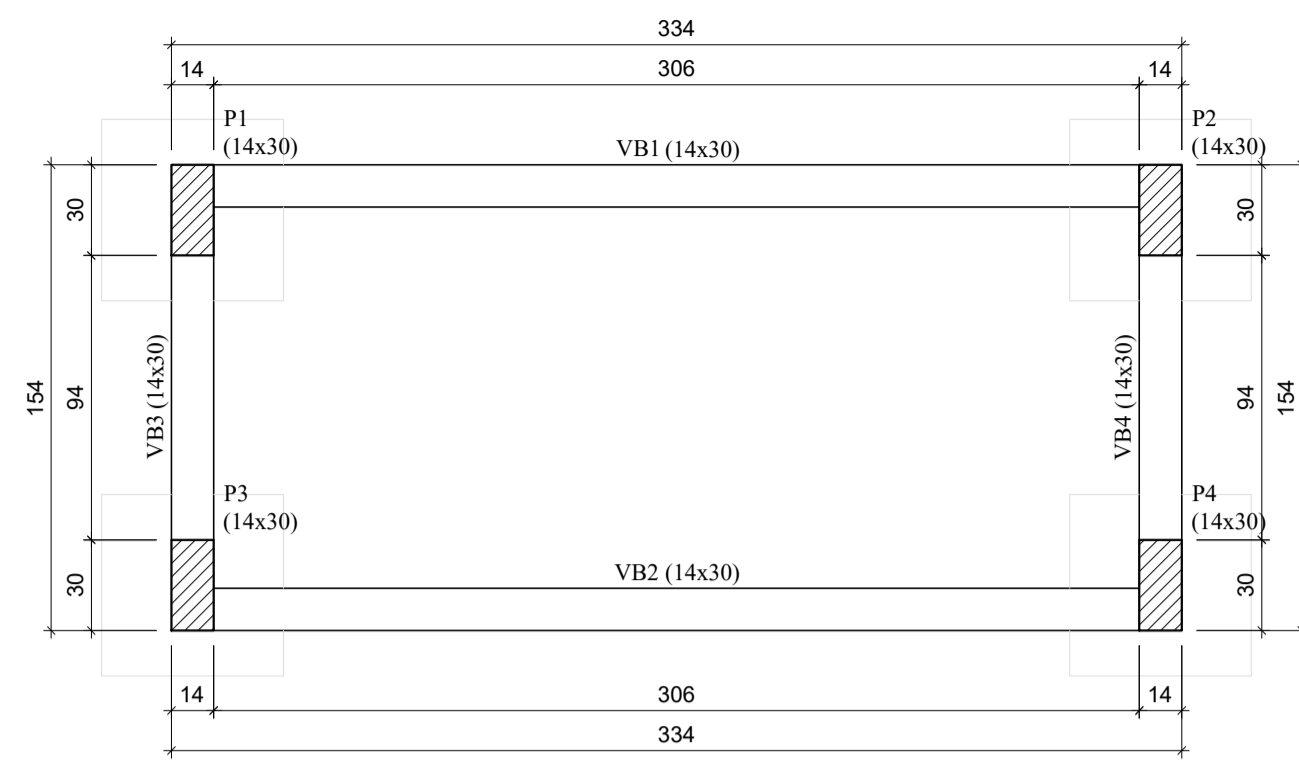
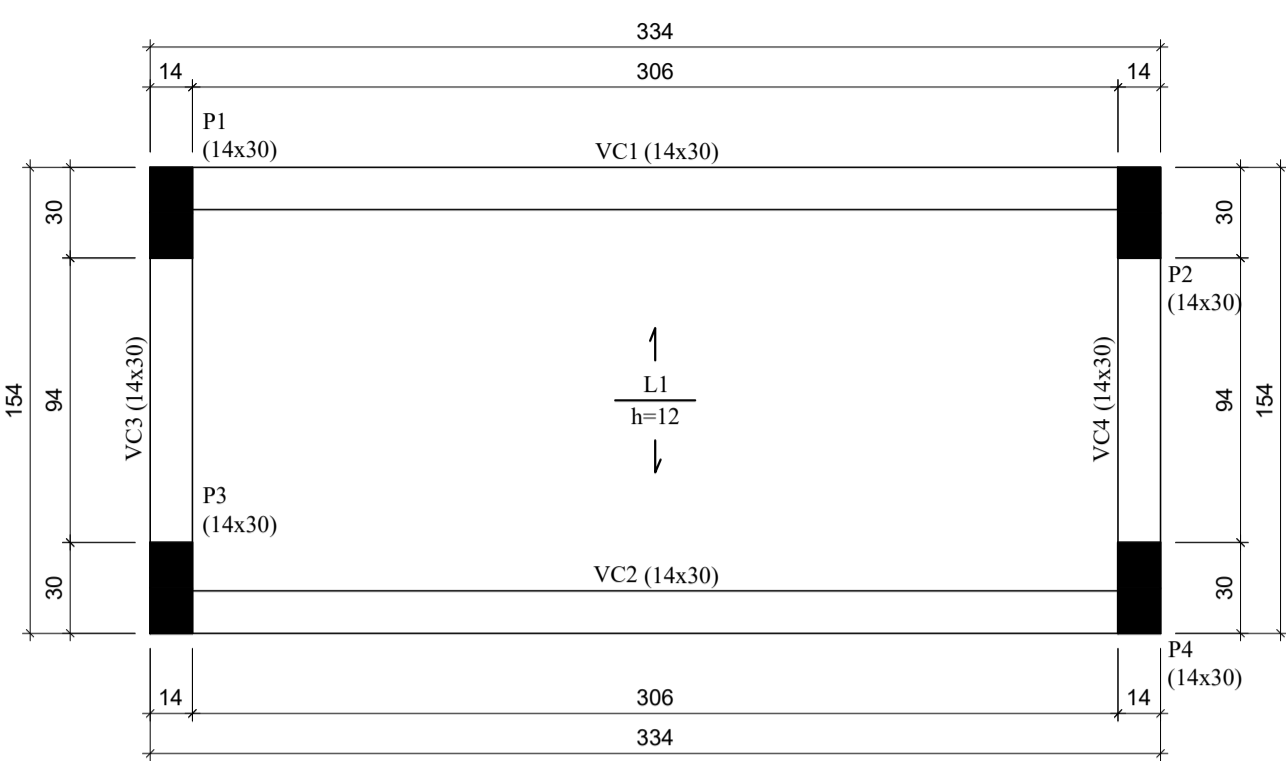


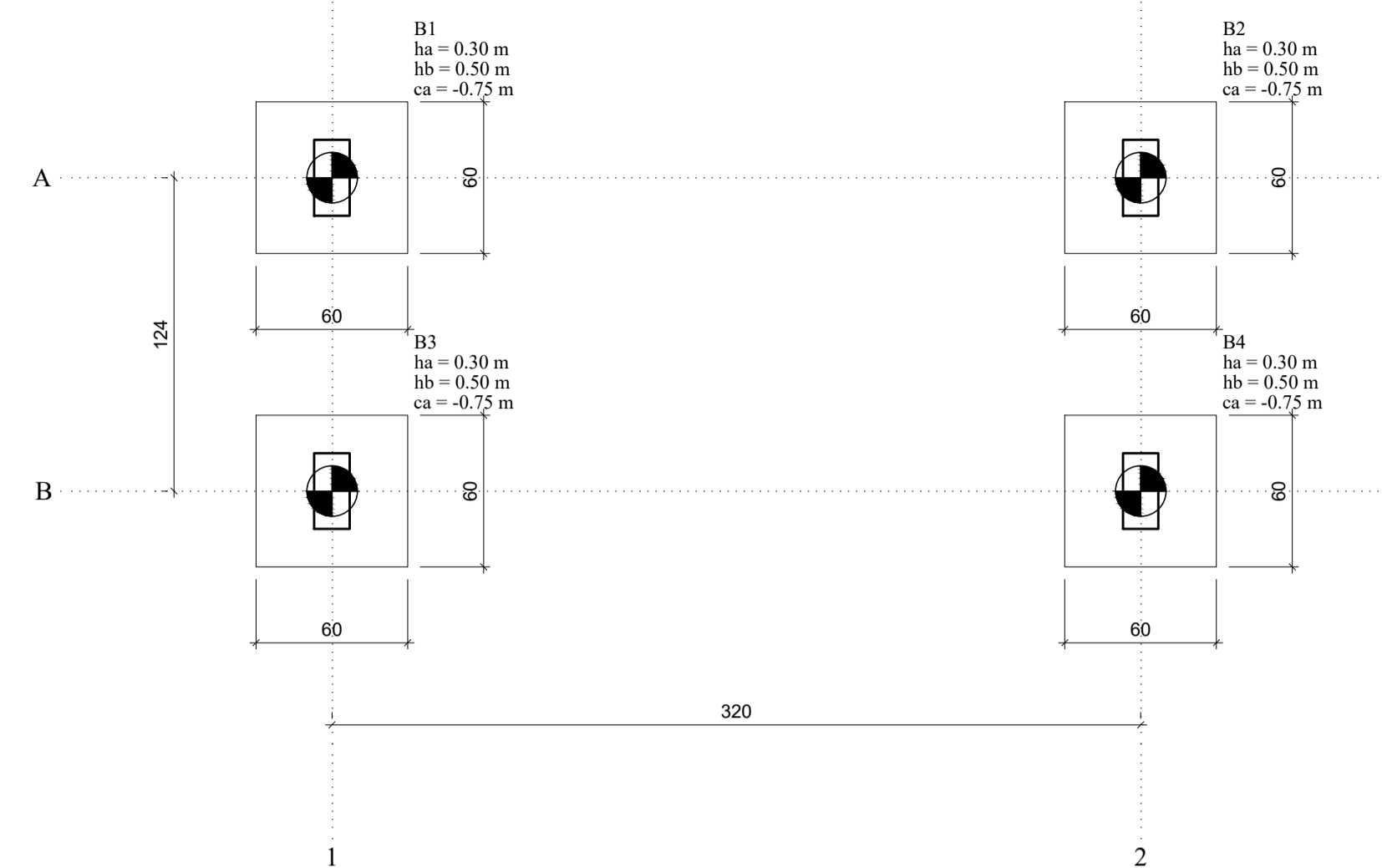
PROJETO ESTRUTURAL DA CASA DE BOMBAS  
ESCALA INDICADA



FORMA DO PAVIMENTO TÉRREO (NÍVEL 0.00)  
ESCALA 1:25

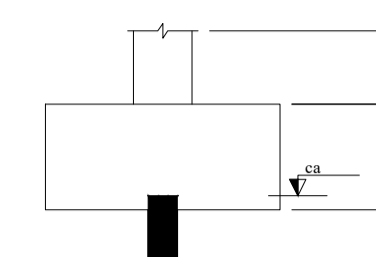


FORMA DO PAVIMENTO COBERTURA  
ESCALA 1:25



PLANTA DE LOCALIZAÇÃO DAS ESTACAS  
ESCALA 1:25

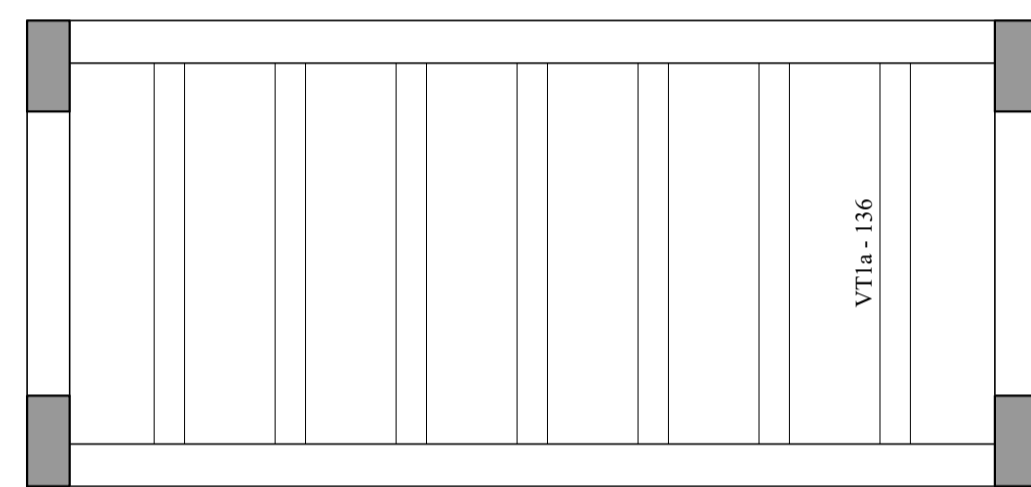
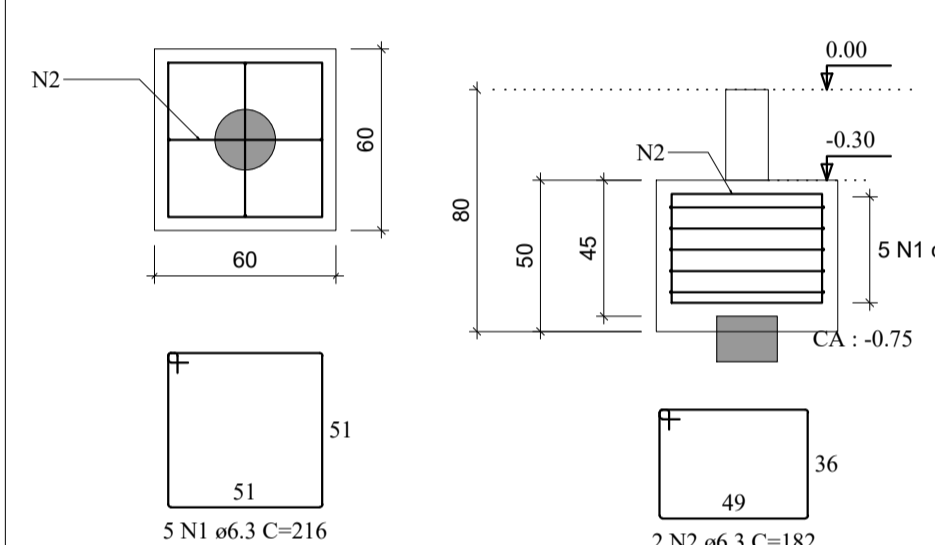
Símbolo	Nome	d (cm)	Quantidade
	C20	20,00	4



DETALHAMENTO TÍPICO DAS BROCAS Ø20 cm  
ESCALA 1:20

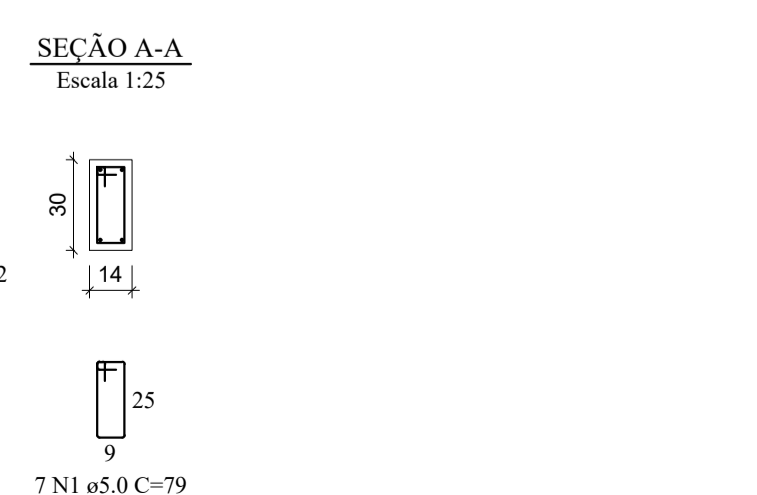
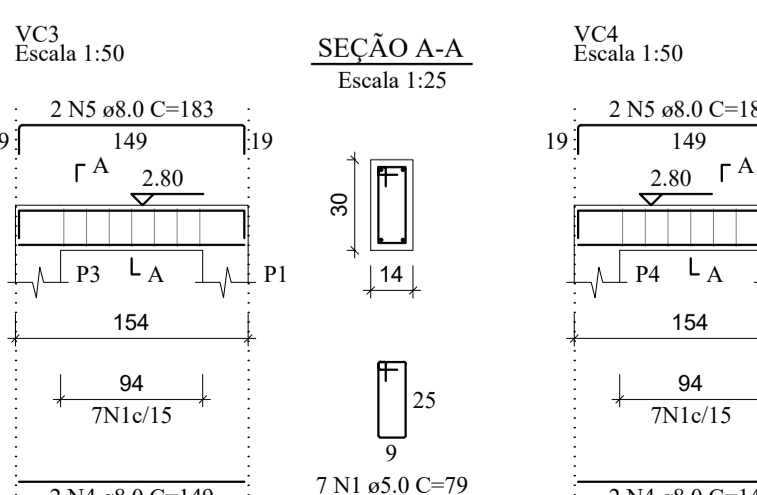
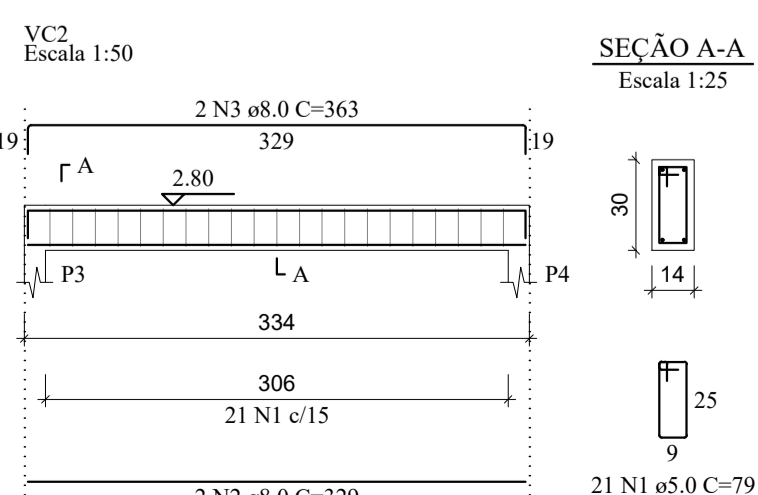
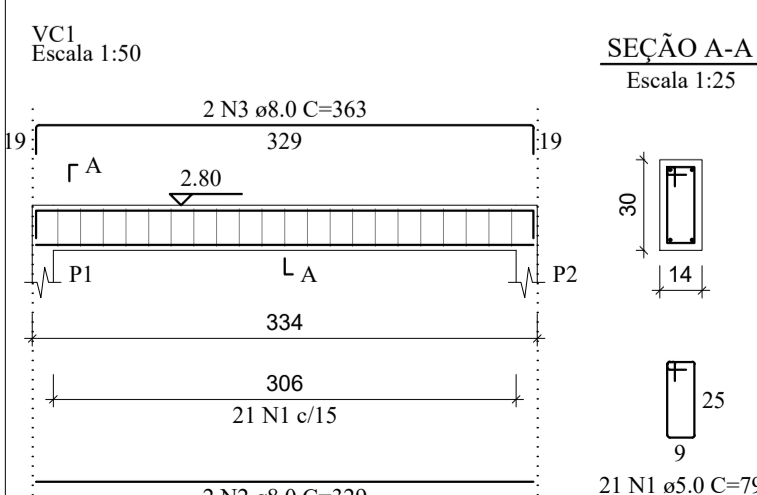
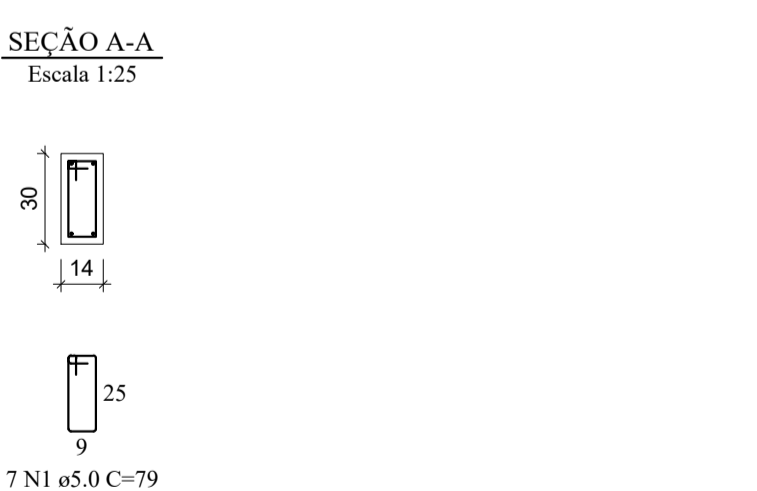
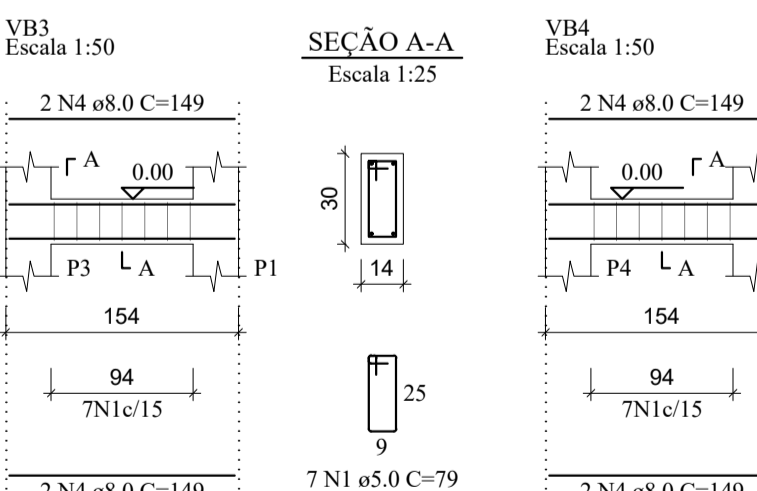
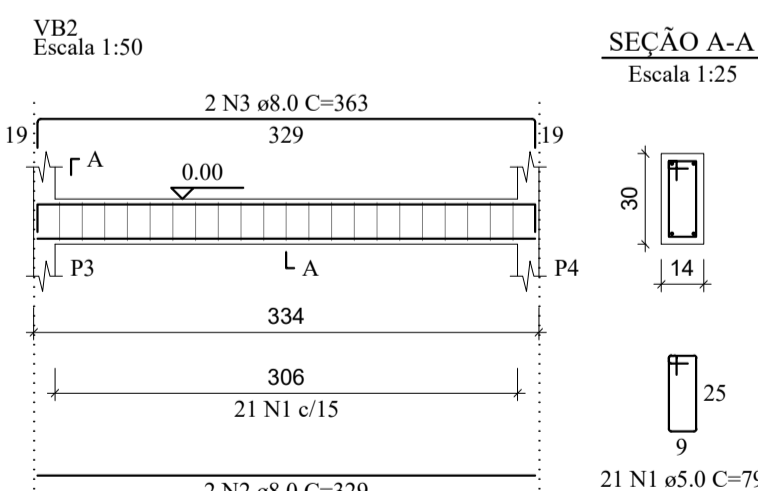
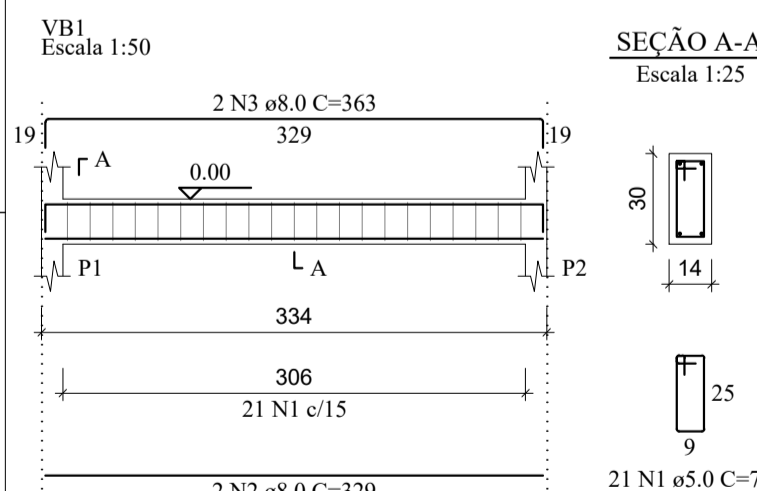
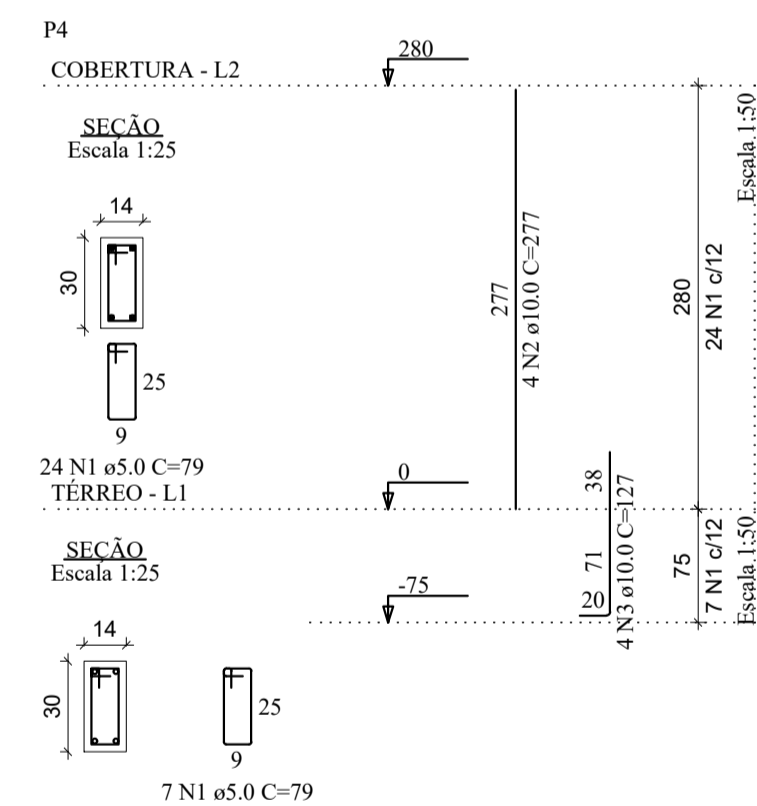
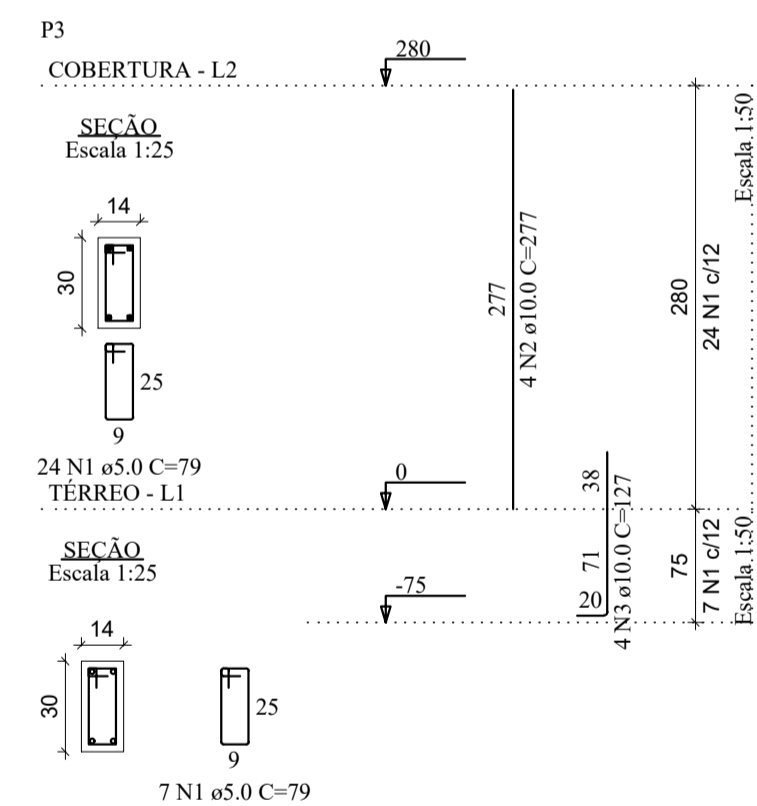
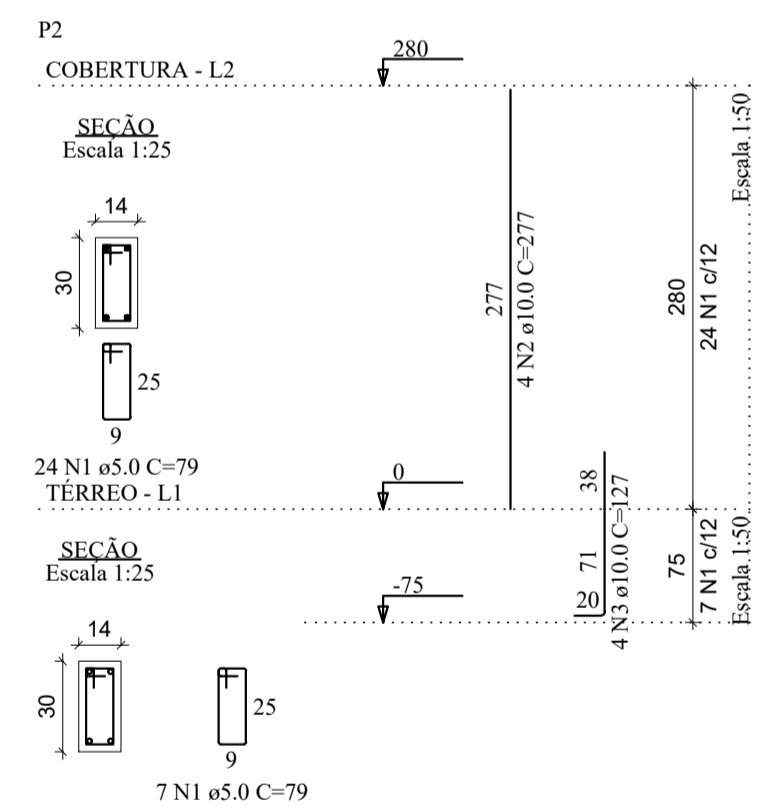
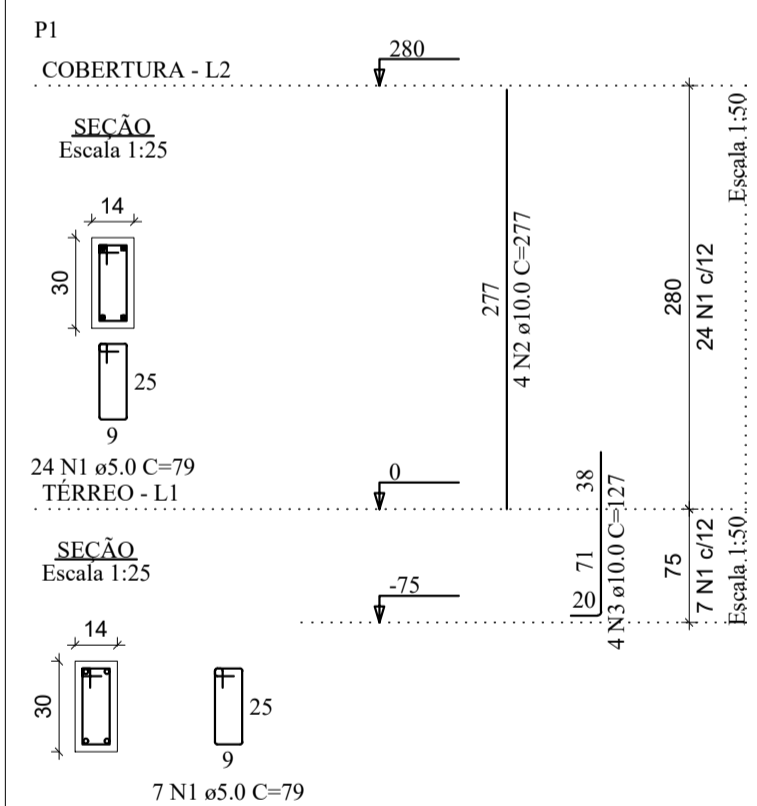
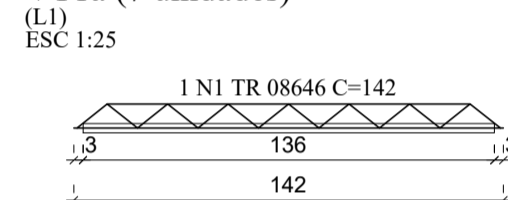
BLOCOS DE COROAMENTO

PLANTA Escala 1:25  
CORTE Escala 1:25



PLANTA DE VIGOTAS PRÉ-MOLDADAS  
ESCALA 1:25

VT1a (7 unidades)



RELAÇÃO DO AÇO

AÇO	N	DIAM (mm)	QUANT	C.UNIT (cm)	C.TOTAL (cm)
CA60	1	5.0	124	79	9796
CA50	2	10.0	16	277	4432
CA50	3	10.0	16	127	2032

RESUMO DO AÇO

AÇO	DIAM (mm)	C.TOTAL (m)	QUANT + 10% (Barras)	PESO + 10% (kg)
CA50	10.0	64.6	6	43.8
CA60	5.0	98	9	16.6
PESO TOTAL (kg)				
CA50		43.8		
CA60		16.6		

Volume de concreto (C-25) = 0.52 m³

Área de forma = 12.50 m²

AÇO	N	DIAM (mm)	QUANT	C.UNIT (cm)	C.TOTAL (cm)
CA60	1	5.0	56	79	4424
CA50	2	8.0	4	329	1316
CA50	3	8.0	4	363	1452
CA50	4	8.0	8	149	1192

RESUMO DO AÇO

AÇO	DIAM (mm)	C.TOTAL (m)	QUANT + 10% (Barras)	PESO + 10% (kg)
CA50	8.0	39.6	4	17.2
CA60	5.0	44.2	5	7.5
PESO TOTAL (kg)				
CA50		17.2		
CA60		7.5		

Volume de concreto (C-25) = 0.34 m³

Área de forma = 7.22 m²

AÇO	N	DIAM (mm)	QUANT	C.UNIT (cm)	C.TOTAL (cm)
CA60	1	5.0	56	79	4424
CA50	2	8.0	4	329	1316
CA50	3	8.0	4	363	1452
CA50	4	8.0	4	149	596
CA50	5	8.0	4	183	732

RESUMO DO AÇO

AÇO	DIAM (mm)	C.TOTAL (m)	QUANT + 10% (Barras)	PESO + 10% (kg)
CA50	8.0	41	4	17.8
CA60	5.0	44.2	5	7.5
PESO TOTAL (kg)				
CA50		17.8		
CA60		7.5		

Volume de concreto (C-25) = 0.34 m³

Área de forma = 7.22 m²

RELAÇÃO DO AÇO

AÇO	N	DIAM (mm)	QUANT	C.UNIT (cm)	C.TOTAL (cm)
CA50	1	6.3	20	216	4320
CA50	2	6.3	8	182	1456

RESUMO DO AÇO

AÇO	DIAM (mm)	C.TOTAL (m)	QUANT + 10% (Barras)	PESO + 10% (kg)
CA50	6.3	57.8	6	15.5
PESO TOTAL (kg)				
CA50		15.5		

Volume de concreto (C-30) = 0.71 m³

Área de forma = 4.80 m²

REV. 00	09/05/22	EMISSÃO INICIAL	DAC
REVISÃO:	DATA :	DESCRIÇÃO:	RESP.:

CLIENTE	
---------	--

PROJETO

Rua Miguel Vianna, nº 81, Sala 12  
Bairro Morro Chic  
CEP: 37500-080 - Itajubá / MG  
Tel: (35) 3623-5720  
www.dacengenharia.com.br

GERÊNCIA DE PROJETOS  
FELIPE GUIMARÃES ALEXANDRE CREA: MG-245.296/D

COORDENAÇÃO DE PROJETOS  
ALOSIO CAETANO FERREIRA CREA: MG-97.132/D

PROJETO  
RESPONSÁVEL TÉCNICO  
ENGR. CIVIL FLÁVIA C. BARBOSA CREA: MG-187.842/D

ASHELLEY MONIQUE BARBOSA

DESENHO  
ASHELLEY MONIQUE BARBOSA

EMPRESAMENTO

**PADRÃO CASA DE BOMBAS**

ENDEREÇO  
RUA NILSON SCHIMDT, JARDIM OLIMPICO  
POUSO ALEGRE - MINAS GERAIS

ASSUNTO  
PROJETO ESTRUTURAL E TABELAS

DISCIPLINA  
COMPLEMENTAR

FASE DO PROJETO  
EXECUTIVO

FOLHA Nº.  
02/02

DATA INICIAL	ESCALA	REVISÃO	ARQUIVO
17/07/2019	INDICADA	ROO	CASA DE BOMBAS.DWG